

20th Genealogy Lock In

Friday, October 15, 2021

10 AM - 7 PM

A virtual lineup of programs on a variety of topics

Discover history for yourself!

Register online at calendar.wacolibrary.org

*For more information call 254-750-5945
or visit wacolibrary.org or ctgs.org*

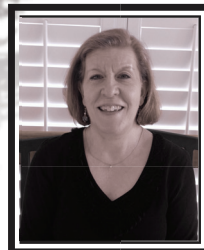
Speakers include:



Judy G. Russell, JD, CG, CGL, The Legal Genealogist



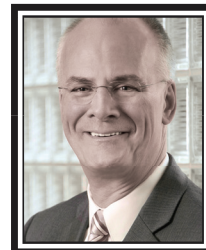
Susan Ball, President TxGS



Kathy Huber, MLS, Director of the Tulsa Genealogy Center, Hardesty Public Library



Teresa Steinkamp McMillin, CG



Curt B. Witcher, MLS, FUGA, IGSF
Manager,
The Genealogy Center Senior
Manager, Special Collections,
Allen County Public Library



Blaine Bettinger, PhD, JD, The Genetic Genealogist



Susan Kaufman, Senior Manager,
Houston Public Library, Clayton
Library Center for Genealogical
Research



Hannah Kubacak, Genealogy Librarian, Genealogy Center, Waco-McLennan County Library



2021 Genealogy Lock-In Program of Events (Friday, October 15, 2021)

10:00 – 10:50 am **NARA Mythbusters: Your Family IS in the Archives**, **Difficulty: Beginner**

Judy G Russell, JD, CG, CGL, The Legal Genealogist **Sponsored by:** Friends of Corpus Christi Public Libraries

“All the military records were burned in the fire.” “There isn’t any birth, marriage or death information in federal records.” “There aren’t any details about ordinary families at the National Archives.” These kinds of myth-statements stop genealogists from breaking down all kinds of brick walls using the wealth of information in NARA records. Join the mythbusters with the treasures the National Archives holds for your family.

11:00 – 11:50 am **Methodology: Using Timelines to Focus Your Research**, **Difficulty: Beginner**

Susan Ball, President TxSGS

The most important tool you can use to research your ancestor is a timeline. Learn how to construct a timeline for your ancestor and use it to uncover previously overlooked avenues for research.

12:00 – 1:15 pm **Beginning Genealogy Workshop**, **Difficulty: Beginner**

Kathy Huber, MLS, Director of the Tulsa Genealogy Center, Hardesty Public Library

This workshop will explain the steps necessary to begin your family history research and introduce useful records that will assist you in getting started on the right track. Exploring some basic genealogy research records, we'll discuss how to locate and use them to your advantage. Bring lunch and join us for this informative and fun workshop.

1:25 – 2:30 pm **So, You’ve Found Your German Town of Origin, Now What?**, **Difficulty: Intermediate**

Teresa Steinkamp McMillin, CG **Sponsored by:** Waco-McLennan County Library

Finding your ancestor’s town of origin can be exciting. Once this piece of information is found, you might be left wondering how to get records from the other side of the ocean. This lecture focuses on how to get records for German towns. Highlights include: verifying the location, strategies for identifying misspelled town names, finding historical jurisdictions, finding records for that town, useful aids for reading those records, tips for hiring a professional genealogist in Germany, when necessary.

2:40 – 3:35 pm **Fingerprinting Our Families: Using Ancestral Origins as a Genealogical Research Key**, **Difficulty: Beginner**

Curt B. Witcher, MLS, FUGA, IGSF Manager, The Genealogy Center Senior Manager, Special Collections, Allen County Public Library

Explore how the concept of “America, the Great Melting Pot” may really be a flawed concept. Identifying the ethnic group of one’s ancestor or potential ancestor can pay some significant research dividends. Topics covered include how to build a historical context for one’s ancestor, studying population clusters, paying attention to patterns of all sorts (naming, migration, settlement, etc.), understanding the motivations of migration, and locating resource repositories.

3:45 – 5:00 pm **Attacking 18th and 19th Century Mysteries with DNA**, **Difficulty: Intermediate**

Blaine Bettinger, Ph.D., J.D., The Genetic Genealogist **Sponsored by:** Waco-McLennan County Library

Did you know that you have an arsenal of Secret DNA Weapons at your fingertips? These tools can help you attack those mysteries from the 1900s and 1800s! Learn how to harness the power of Shared Matching to pull out matches related via a mystery ancestor, how to build Research Trees to quickly identify common ancestry, and more!

5:10 – 6:00 pm **Filling in the Family Stories**, **Difficulty: Beginner**

Susan Kaufman, Senior Manager, Houston Public Library, Clayton Library Center for Genealogical Research

This presentation, through examples of sources, will help you to understand the context in which your family lived, celebrated, cooked, listened to music, and other daily activities that all help provide the stories that make our families come alive. Stories in context go beyond just a name, date and place on a pedigree chart. Social history helps us to better understand lives, provides context to our research, adds interest to the pedigree chart and can also lead to additional records.

6:10 – 7:00 pm **Discover Genealogical Treasure Using Historic U.S. Maps**, **Difficulty: Intermediate**

Hannah Kubacak, Genealogy Librarian, Genealogy Center Waco-McLennan County Library

Maps provide a valuable tool for understanding the world as it was when our ancestors were living. Explore a variety of resources for finding and using historic maps. A few of the maps to be discussed during this presentation will include Fire Insurance maps, county boundaries, Public Land Survey System maps, and land grants.

